



SafeNet Technical Note

Installing a ProtectDrive ADAM Replication Instance

Copyright © 2007 SafeNet, Inc
All rights reserved

This document contains Proprietary and Confidential information of SafeNet, and is protected by copyright, trade secret and other state and federal laws. Its receipt or possession does not convey any rights to reproduce, disclose its contents, or to manufacture, use or sell anything it may describe. Reproduction, disclosure or use without specific written authorization of SafeNet is strictly prohibited.

Generated: 12 Nov 2007 - 11:11

Table of Contents

Installing a ProtectDrive ADAM Replication Instance.....	1
References.....	7

Installing a ProtectDrive ADAM Replication Instance

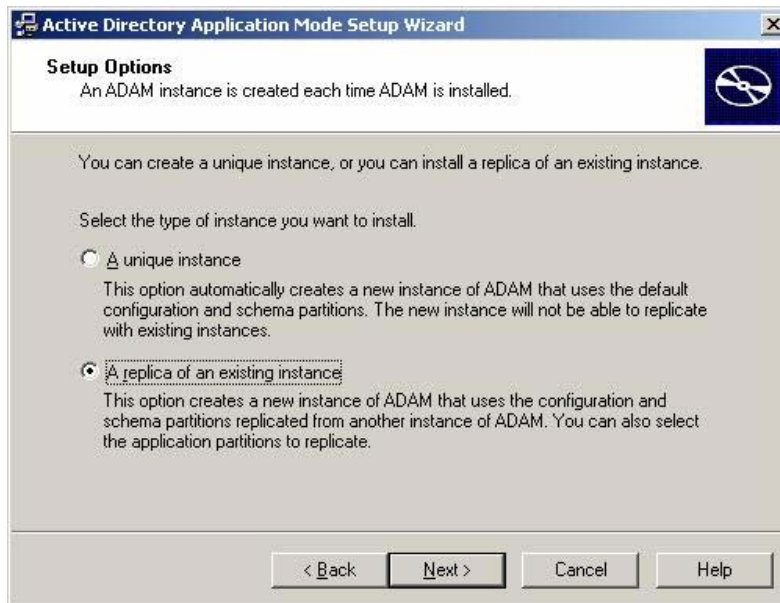
Product	Versions
ProtectDrive	8.2 and later

These instructions will walk through setting up a simple replication instance for ProtectDrive. It is assumed that an initial ProtectDrive ADAM instance has already been installed.

1. Click Start \ All Programs \ ADAM \ Create an ADAM instance
2. On the Active Directory Application Mode Setup Wizard Welcome screen click Next.



3. On the Setup Options screen select "A replica of an existing instance" and click Next.



4. On the Instance Name screen type a name for the instance, for example "ProtectDrive" and click Next.

Installing a ProtectDrive ADAM Replication Instance

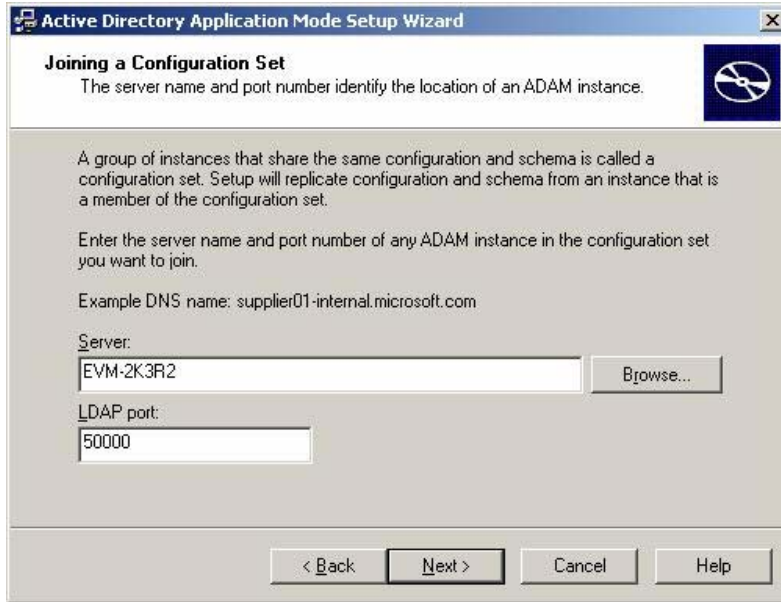
The screenshot shows the 'Instance Name' screen of the 'Active Directory Application Mode Setup Wizard'. The title bar reads 'Active Directory Application Mode Setup Wizard'. The main heading is 'Instance Name'. Below it, a paragraph states: 'The instance name is used to differentiate this instance of ADAM from other ADAM instances on this computer.' To the right is a blue icon with a white circle and a diagonal slash. The instructions say: 'Type a name for this instance. The name should reflect the use for which this instance of ADAM is intended.' Below this is a text box labeled 'Instance name:' containing the text 'ProtectDrive'. An example is given: 'Example: Addressbook1'. Another paragraph states: 'The ADAM service name is created when the instance name is combined with the product name. It will be displayed in the list of Windows services.' Below this, the 'ADAM service name:' is shown as 'ADAM_ProtectDrive'. At the bottom are four buttons: '< Back', 'Next >', 'Cancel', and 'Help'.

5. On the Ports screen enter the ports you wish the instance to run on and click Next.

The screenshot shows the 'Ports' screen of the 'Active Directory Application Mode Setup Wizard'. The title bar reads 'Active Directory Application Mode Setup Wizard'. The main heading is 'Ports'. Below it, a paragraph states: 'Computers will connect to this instance of ADAM using specific ports on all of the IP addresses associated with this computer.' To the right is a blue icon with a white circle and a diagonal slash. The instructions say: 'The ports displayed below are the first available for this computer. To change these ports, type the new port numbers in the text boxes below.' Below this is a paragraph: 'If you plan to install Active Directory on this computer, do not use 389 for the LDAP port or 636 for the SSL port because Active Directory uses these port numbers. Instead, use available port numbers from the following range: 1025-65535.' Below this are two text boxes: 'LDAP port number:' containing '50000' and 'SSL port number:' containing '50001'. At the bottom are four buttons: '< Back', 'Next >', 'Cancel', and 'Help'.

6. On the Joining a Configuration Set screen enter the server name and port where the original ADAM instance exists and click Next.

Installing a ProtectDrive ADAM Replication Instance



7. On the Administrative Credentials for the Configuration Set screen select an account to administer the ADAM Configuration set and click Next.



8. On the Copying Application Directory Partitions screen select the "CN=PDPpartition" partition in the Available partitions list and click the "Add" button, moving it to the Partitions to copy list. Click Next.

Installing a ProtectDrive ADAM Replication Instance



9. On the File Locations screen select the location where you wish to store the ADAM data files and click Next.



10. On the Service Account Selection screen select Network service account and click Next.

Installing a ProtectDrive ADAM Replication Instance

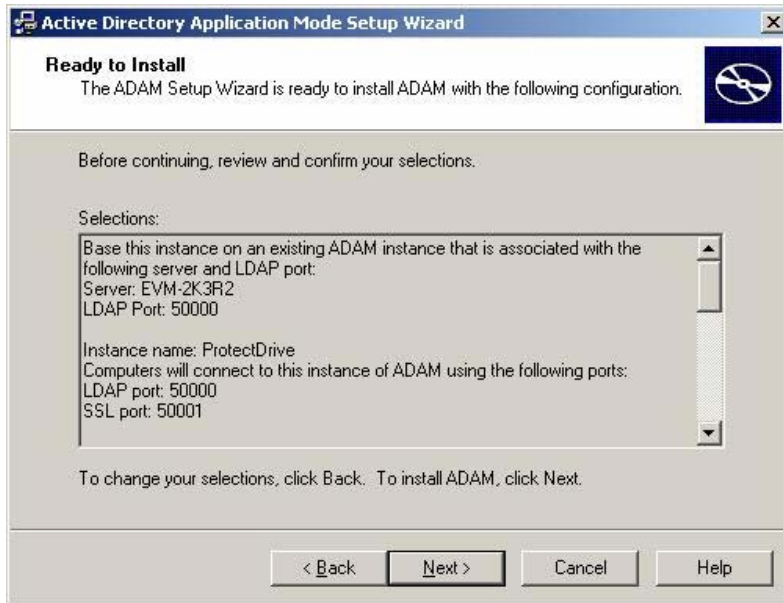


11. On the ADAM Administrators screen select the account you wish to use to administer this ADAM instance and click Next.



12. On the Ready to install screen click Next. The ADAM instance will be created.

Installing a ProtectDrive ADAM Replication Instance



13. Once the instance is created click Finish to exit the wizard.



References

- Understanding ADAM replication and configuration sets

<http://technet2.microsoft.com/windowsserver/en/library/db9893df-3209-4b66-8a68-a17d9bbbd56d1033.msp?mfr=true>